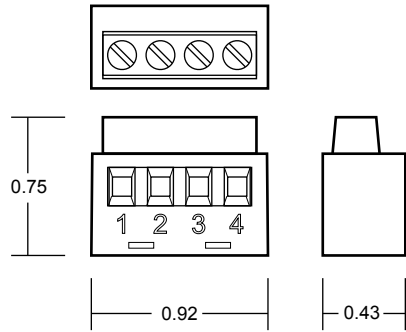


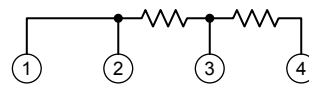
200796 Dual End-of-Line Terminator

BASE

- *new molded design*
- *smoother terminal screw operation*
- *elevator-style wire cage clamp terminals*



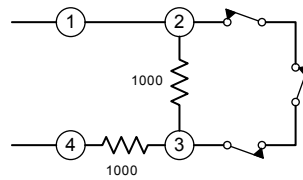
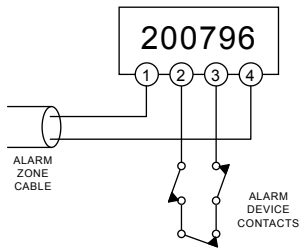
Dimensions



Resistors are 1K Ohm, 1%, 1/4W
Other resistors values available.

Schematic

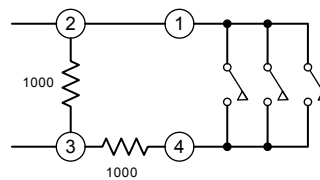
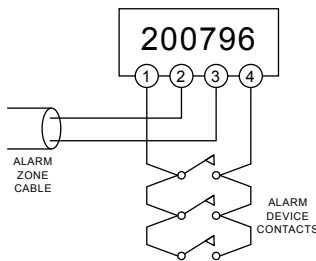
Closed Circuit Alarm Device Wiring



Schematic Diagram

STATUS	DEVICE	RESISTANCE
NORMAL	CLOSED	1000 Ω
ALARM	OPEN	2000 Ω

Open Circuit Alarm Device Wiring



Schematic Diagram

STATUS	DEVICE	RESISTANCE
NORMAL	OPEN	1000 Ω
ALARM	CLOSED	500 Ω