

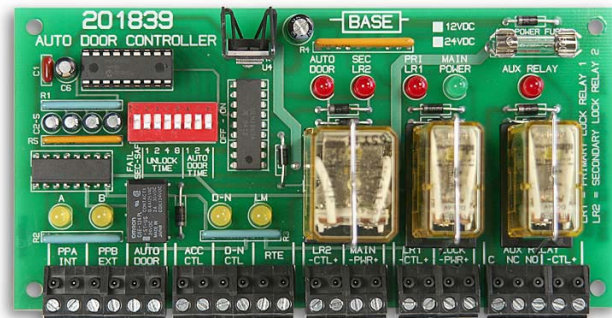
201839

Auto Door Controller

BASE

for
SECURITY
ACCESS CONTROL
systems

- ▶ For use with Fail-Safe or Fail-Secure Locks
- ▶ Interfaces to Access Control Systems
- ▶ Adjustable Unlock Timer 1-22 Sec
- ▶ Adjustable Auto-Door Timer 1-7 Sec
- ▶ Heavy-Duty Output Relays
- ▶ Independent SPDT Aux Relay
- ▶ Status LEDs
- ▶ Compact Size: 3.00 x 6.00



The 201839 Auto Door Controller is a printed circuit board module that controls the operation of a motorized automatic door when used with an electric security lock. Pushbuttons or Card Readers on the inside and/or outside of the door will signal an 'open request' to the module. The module will then provide timed outputs for unlocking and opening the door in the proper sequencing to help prevent damage to the door lock and motor mechanisms. Timer settings for unlock and auto-door are dipswitch selectable.

The 201839 can monitor an external day-night contact (D-N). The module will unlock the door whenever the D-N is closed regardless of the condition of the 'open requests'.

The unit can be used with either Fail-Safe or Fail-Secure locks with no wiring differences. Lock type is dipswitch selectable.

The unit contains status LEDs for monitoring the 12 or 24 vdc input power and all input and output functions. The power input is fused and protected for reverse polarity. Opto-isolated circuit inputs provide additional protection of the processing electronics from static discharge. Several Output Relays and an independent Auxiliary relay are included to provide a wide variety of options for controlling door locks and auxiliary devices. All relays are diode isolated, removable and replaceable. The module size is 3.00 x 6.00 inches.

201839	Board Only - Includes (4) Nylon Mounting Standoffs
201839B	201839 mounted inside a BASE EB-12x12x04KP Econo•Box (enclosure includes knockouts, removable panel, keylock and tamper switch)

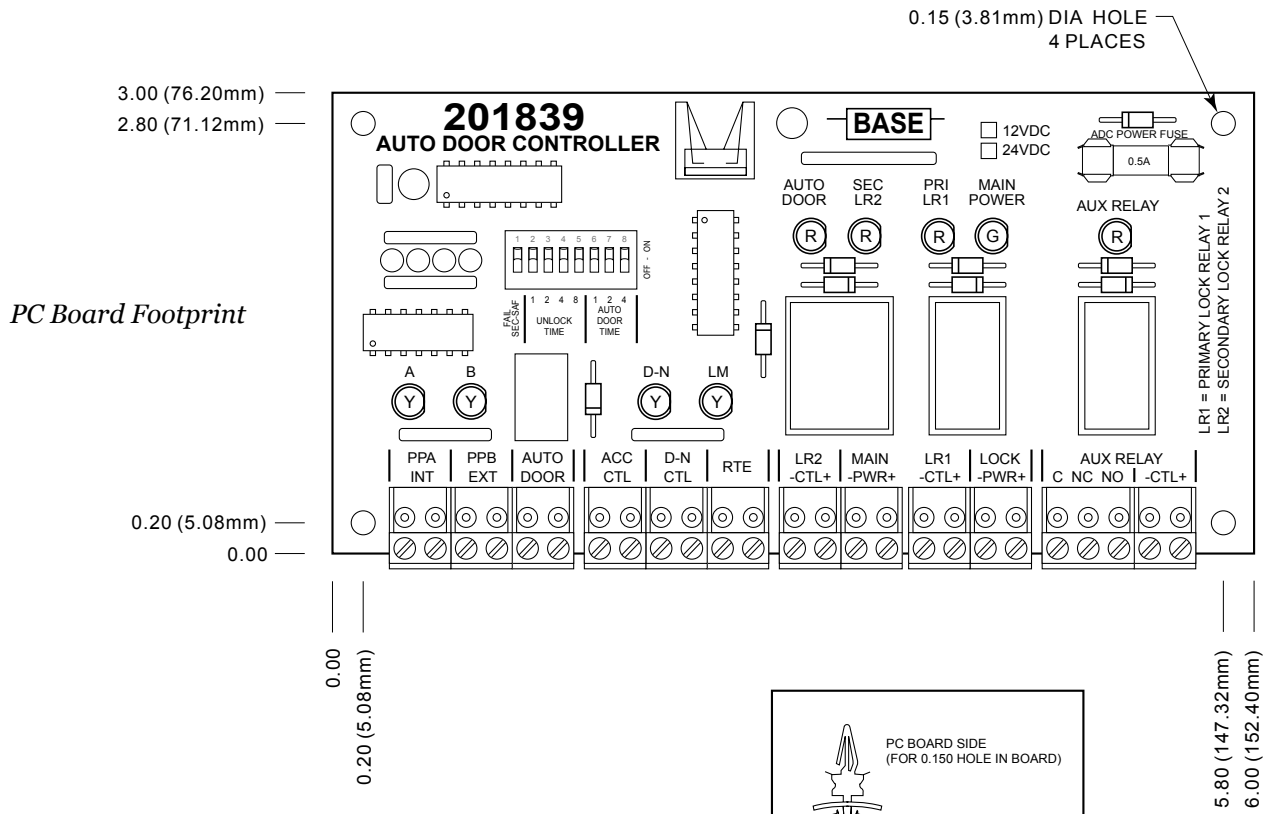


© Copyright 2006-2007 BASE Electronics, Inc.

www.baseelectronics.com

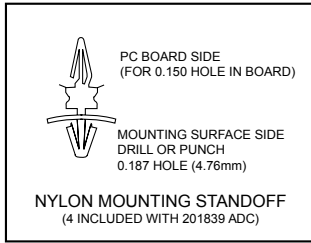


2301839 Auto Door Controller



201839 Auto Door Controller Specifications

- Indoor Temperature Range: -25° C. to +70°C.
- Electrical
 - Main Power Operating Voltage: 12 or 24VDC, Fused at 0.5A
 - Operating Current Draw: 150 mA
 - LR1, LR2, Aux Relay Contact Rating: 10A
 - Auto Door Relay Contact Rating: 2A
 - Connections: Depluggable Screw Terminals for #14 to #24AWG Wire
- Controls and Indicators
 - 8-Position Dipswitch for Options settings
 - Fail-Safe or Fail-Secure operation with no wiring differences
 - LED Status Indicators for all Inputs/Outputs
 - Removable/Replaceable Output Relays
- Size: 3.00 (76.20) wide by 6.00 (152.40) [inches (mm)]
- Mounting: (4) 1/4 inch high nylon standoffs included
- Models
 - 201839 Board Only
 - 201839B 201839 Mounted in EB-12x12x04KP Enclosure
- Other related BASE products
 - 201235 Auto Door Controller
 - Micro-Series Power Distribution Modules
 - Custom Prewired Power Cabinet Assemblies



Ordering Information	
Part Number	Description
201839-12	201839 Auto Door Controller with 12vdc relays
201839-24	201839 Auto Door Controller with 24vdc relays
201839B-12	201839B Auto Door Controller Cabinet with 12vdc relays
201839B-24	201839B Auto Door Controller Cabinet with 24vdc relays

