

# Econo•Box Enclosures

# BASE

• ACCESS CONTROL • BATTERIES • CCTV • ELECTRICAL • INTERFACE •  
• INDUSTRIAL PROCESS CONTROL • PULLBOX • RELAYS • SECURITY •

- Hinged Cover NEMA 1
- Sturdy Steel Construction
- 1/2" Knockouts on all sides
- Powder Coat Finish
- 6 Models in 3 Standard Sizes
  - Plain -HSC Hinged Screw Cover 'pullbox' or
  - Deluxe -KP with Inner Panel, Heavy Duty Tamper/Interlock Switch and Keylock



*Econo•Box Enclosures* are UL/NEMA Type 1 hinged cover electrical boxes. HSC models are plain versions perfect for use as hinged cover pullboxes. The KP models are deluxe versions with keylocks (all keyed alike), form-C tamper/interlock switches, and removable inner steel panels. The removable panel assembly enables shop prewiring and fast field installation. The form-C pushbutton Tamper/Interlock switch features a service test position to simulate the closed condition that is automatically reset when the door is closed.



EB-12x12x04-HSC (front) and EB-12x12x04-KP (back)

All enclosures are of rugged 16 gauge welded steel construction with a high gloss light gray powder coat finish. Equipment panels are also steel with a high gloss white powder coat finish.

BASE can provide prepunched panels or custom prewired assemblies to suit any application. Call for a prompt quotation with a delivery schedule to meet your needs.

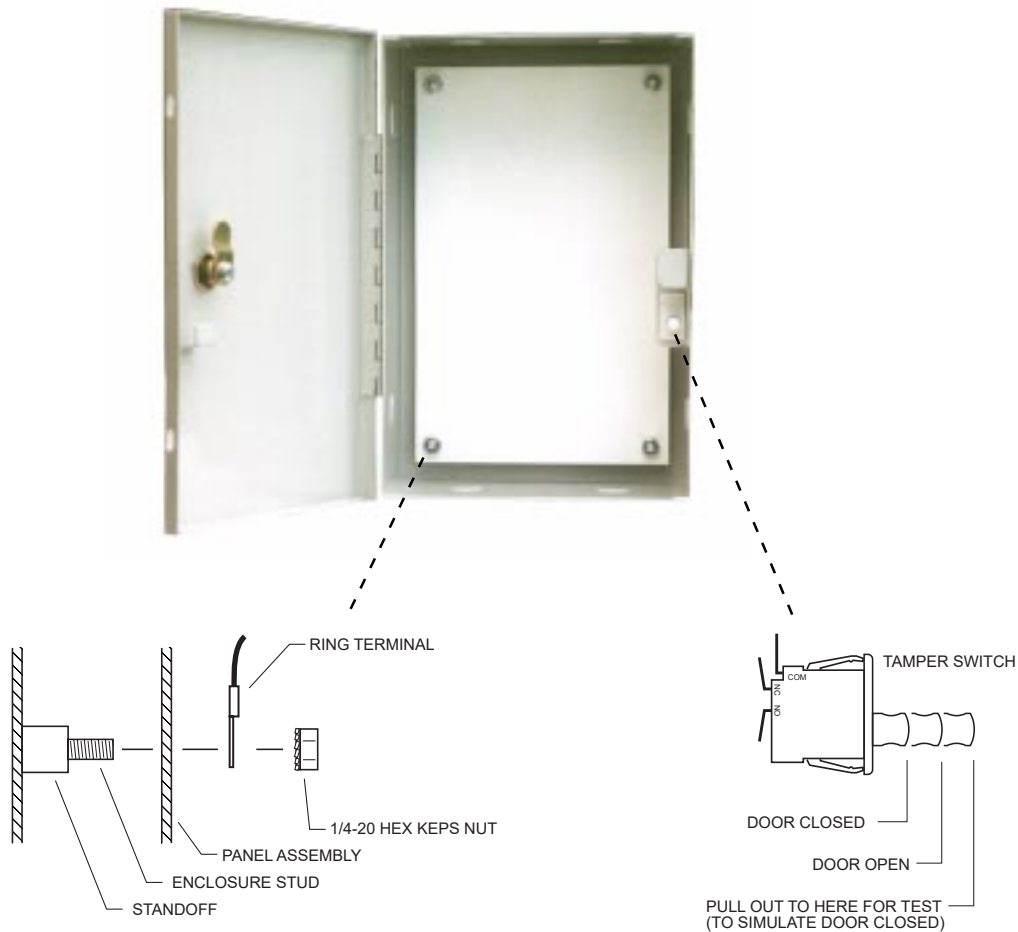
*Econo•Box Enclosures* are smaller versions of the BASE heavy duty LVPC Power Cabinet line. Check 'em all out online at ...

[www.baseelectronics.com](http://www.baseelectronics.com)



BASE Electronics, Inc. • 2856-C Janitell Road • Colorado Springs, CO 80906 • (719) 540-9697 • Fax (719) 540-9698

# Econo•Box Enclosures



**Figure 1. Panel and Ground Wire Installation**

**Figure 2. Tamper/Interlock Switch**

## Specifications

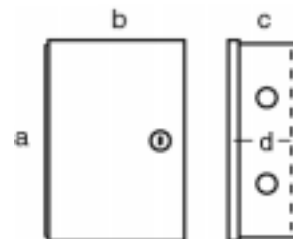
Enclosure Type: UL / NEMA type 1 - Indoor Use Only  
 Construction: 16 gauge welded steel  
 Enclosure Finish: Phosphate Dipped / Light Gray Powder Coat  
 Panel Finish: Phosphate Dipped / White Gloss Powder Coat

### Size and Weight

MODEL	a	b	c	d	PANEL	SHIP WGT
EB 12x08x04 HSC	12.50	8.50	4.20	-	-	7 lbs
EB 12x08x04 KP	12.50	8.50	4.20	3.43	11 x 7	9 lbs
EB 12x12x04 HSC	12.50	12.50	4.20	-	-	9 lbs
EB 12x12x04 KP	12.50	12.50	4.20	3.43	11 x 11	11 lbs
EB 16x12x04 HSC	16.50	12.50	4.20	-	-	11 lbs
EB 16x12x04 KP	16.50	12.50	4.20	3.43	15 x 11	14 lbs

Tamper Switch: Pushbutton with cheat feature for service testing  
 Form-C Contacts rated 10Amp at 125/250 VAC  
 silver cadmium oxide, 0.187" quik-connect terminals

Mounting: Holes (4) provided in rear of enclosure  
 Panel Mounting: On (4) 1/4-20 studs (hardware included)  
 Keylock: 90° Rotation - All enclosures keyed alike  
 Knockouts: 8 - 1/2" (2 each side)



[www.baseelectronics.com](http://www.baseelectronics.com)