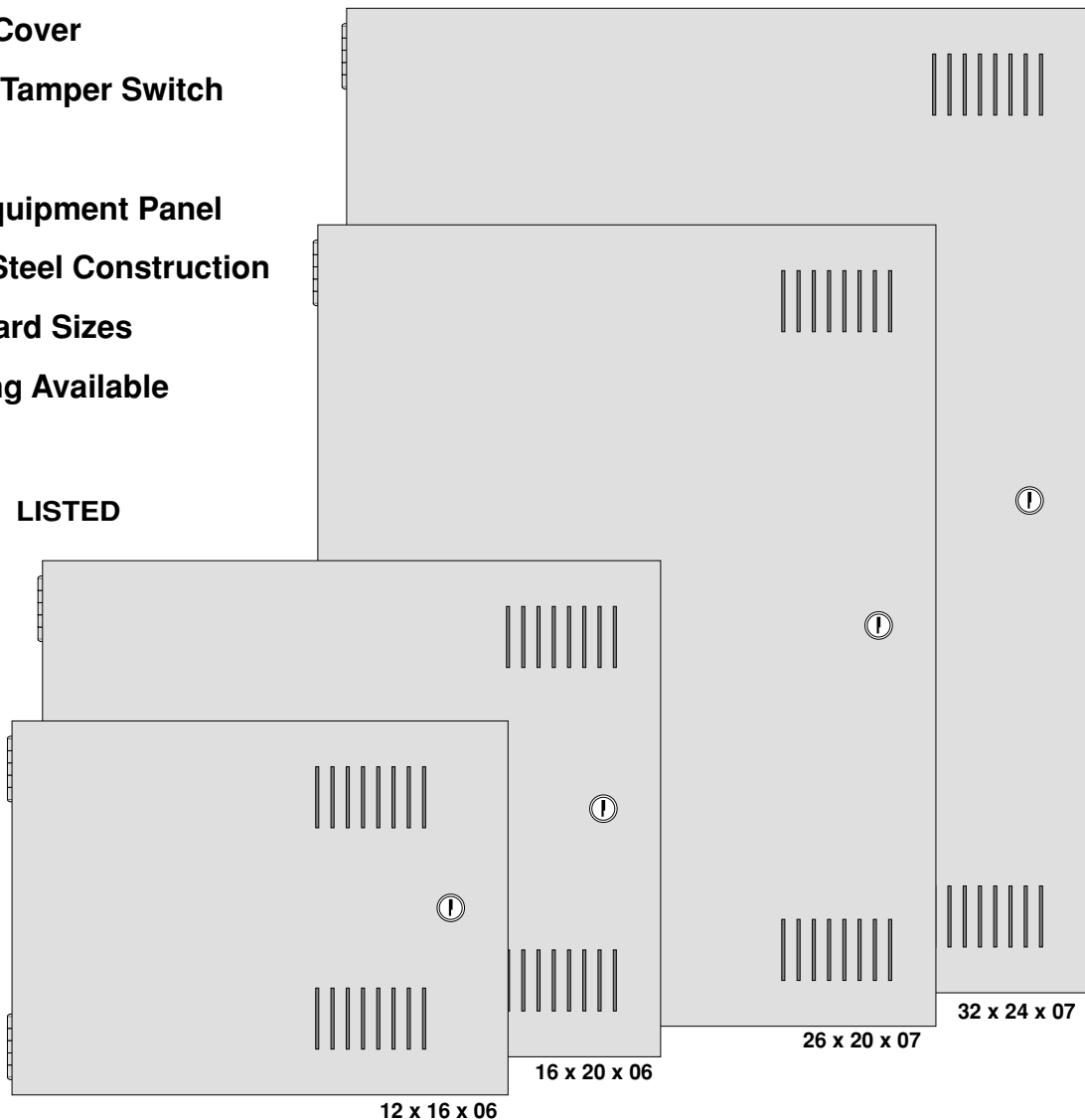


LVPC Low Voltage Power Cabinet

BASE

- Hinged Cover NEMA 1
- Vented Cover
- Form-C Tamper Switch
- Keylock
- Inner Equipment Panel
- Sturdy Steel Construction
- 4 Standard Sizes
- Prewiring Available



The LVPC Low Voltage Power Cabinets are NEMA 1 hinged cover enclosures with built-in keylocks, form-C tamper switches, and removable steel equipment panels intended for use by the security and other industries for housing the BASE LV Series Power Distribution Modules and/or other system components. The removable equipment panel assembly enables shop prewiring and fast field installation. Each enclosure includes a form-C pushbutton Tamper Switch. The switch features a service test position that is automatically reset when the door is closed. Vent slots are provided in the enclosure door for air circulation to power supplies, etc.

All enclosures are of rugged welded steel construction with a high gloss light gray powder coat finish. Equipment panels are also steel with a high gloss white powder coat finish. All panels can be pre-drilled for various combinations of BASE LV Series Power Distribution Modules.

BASE can provide custom prewired assemblies to suit any application and combination of power system or other system components. Call for a prompt quotation with a delivery schedule to meet your needs.

BASE Electronics, Inc. • 2856-C Janitell Road • Colorado Springs, CO 80906 • (719) 540-9697 • Fax (719) 540-9698

UNPACKING AND INSPECTION

The LVPC Low Voltage Power Cabinet includes the following items. Please inspect and verify that the correct items are included while unpacking the unit.

- 1 - LVPC Hinged Cover Enclosure with Keylock
- 2 - Keys in envelope taped to side or rear of enclosure
- 1 - Removable Panel Assembly
- 1 - Panel Hardware Kit A, (4) 1/4-20 Hex Nut, (5) 1/4 Lockwasher or
- 1 - Panel Hardware Kit B, (6) 1/4-20 Hex Nut, (7) 1/4 Lockwasher
- 1 - Tamper Switch mounted in enclosure bracket
- 2 - Push-on Crimp Terminals for Tamper Switch

ENCLOSURE INSTALLATION

1. Remove the Panel Assembly from the unit.
2. Hold the enclosure in the desired area and mark the rear panel keyhole locations on the wall or mounting channel surface.
3. Using the appropriate hardware with large internal washers, mount the enclosure to the desired area.
4. Complete all conduit and cable installations into the enclosure.
5. Install the Panel Assembly into the enclosure and secure to the studs on the rear of the enclosure with the Panel Hardware Kit items as shown in Figure 1 below.
6. If a panel ground terminal is desired, attach it to one of the mounting stud locations using a ring-type terminal as shown in Figure 2.
7. Check to verify that the enclosure door is properly operating the tamper switch when in the closed and locked position. Remove play in the locked position by slightly bending the lock tab on the enclosure side wall if necessary. For service testing, the Tamper Switch button can be pulled out to simulate a closed door. This function is automatically reset when the door is closed.
8. If your unit has a pre-wired Panel Assembly, complete the wiring shown on separate instructions.
9. Complete the Tamper Switch wiring using the Push-on Crimp Terminals provided. Connect to the Common (COM) and Normally Open (NO) for closed circuit loop and Common (COM) and Normally Closed (NC) for open circuit loop as shown in Figure 3 below.

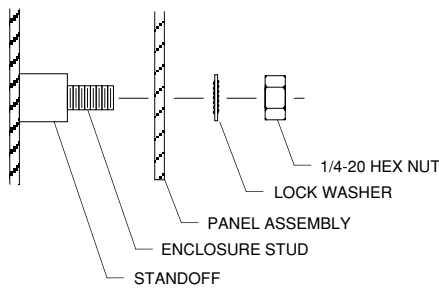


Figure 1. Panel Installation

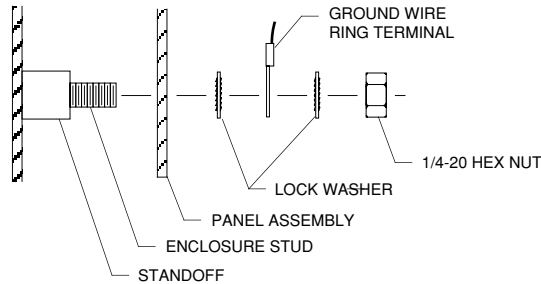


Figure 2. Ground Wire Installation

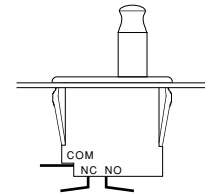


Figure 3. Tamper Switch Wiring

Specifications

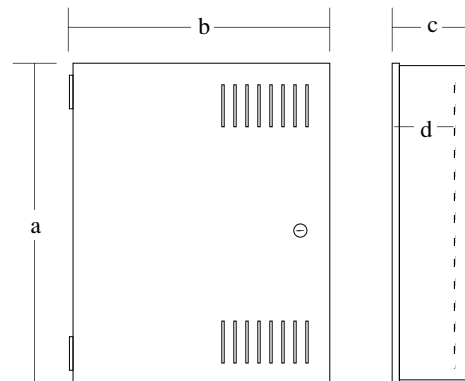
Enclosure Type: NEMA 1 - Indoor Use Only
 Construction: 16 gauge welded steel (units 7 inches deep are 14 gauge)
 Enclosure Finish: Phosphate Dipped / Light Gray Powder Coat
 Panel Finish: Phosphate Dipped / White Gloss Powder Coat



Size and Weight

MODEL	a	b	c	d	PANEL	SHIP WGT
LVPC 12x16x06	12.25	16.50	6.25	5.25	11 x 15	20 lbs
LVPC 16x20x06	16.25	20.50	6.25	5.25	15 x 19	28 lbs
LVPC 26x20x07	26.25	20.50	7.25	6.25	25 x 19	54 lbs
LVPC 32x24x07	32.25	24.25	7.25	6.25	31 x 23	74 lbs

Tamper Switch: Pushbutton with cheat feature for service testing
 Form-C Contacts rated 10Amp at 125/250 VAC
 silver cadmium oxide, 0.187" quik-connect terminals
 Mounting: Keyholes (4) provided in rear of enclosure
 Panel Mounting: On (4) 1/4-20 studs (hardware included)
 (6 studs on LVPC 32x24x07)
 Keylock: 90° Rotation - All enclosures keyed alike



www.baseelectronics.com